



ACCUFORM

ECONOMICAL - SUSTAINABLE - FORWARD





THE NORTHERN FACADES ADVANTAGE

At Northern Facades, we believe that every space deserves a touch of elegance, and we are thrilled to be a part of creating that through the exciting world of architectural metals.

Why settle for ordinary when you can transform your project into a masterpiece? Let us share with you just a glimpse of what awaits you into the realm of architectural metals:

Timeless Elegance

Architectural metals possess a unique ability to transcend time, offering a seamless blend of classic beauty and contemporary flair. Our metals redefine elegance, leaving a lasting impression on any structure they grace.

Unleash Creativity

Forge a path of standard details or off the shelf products for creativity with our wide range of architectural finishes.

Durability and Longevity

We understand that endurance is key when it comes to architectural materials. Our metals are crafted to withstand the test of time, providing you with peace of mind and a lasting investment that will retain its beauty for years to come.

Versatility Personified

Whether you seek to enhance or create stunning exterior facades, architectural metals offer unrivaled versatility. From stunning wall claddings to metals, bring your vision to life.

Collaborative Expertise

We are more than just a supplier; we are your trusted partner on your journey towards architectural brilliance. Our team of experienced professionals is here to provide you with expert advice, innovative solutions, and unwavering support at every step of the way.

Ready to take the leap into the world of architectural metals? Contact us today to explore our breathtaking range of options and embark on a transformative adventure for your upcoming project. Unleash the magic of architectural metals and create a space that will be remembered for generations to come.

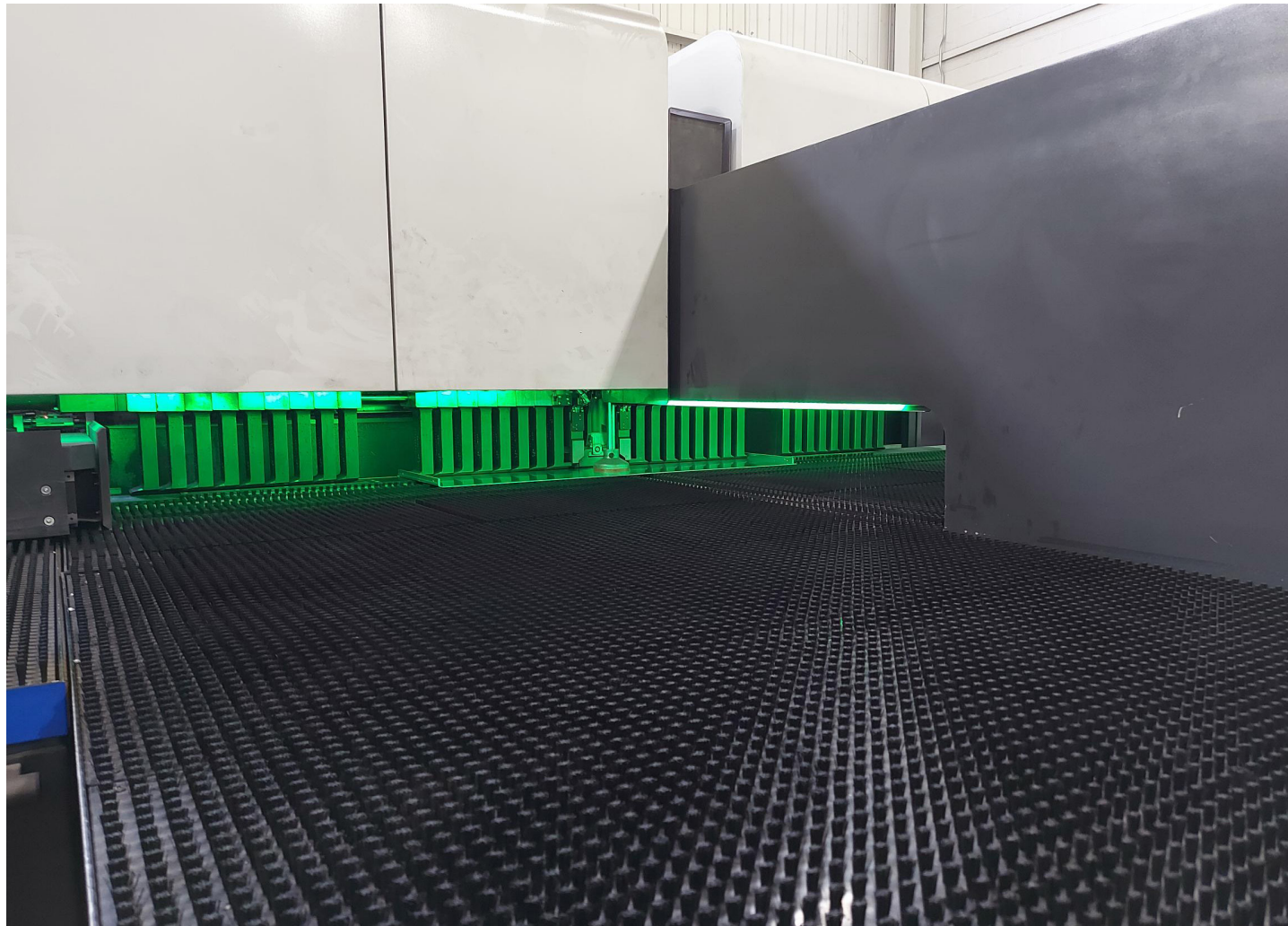
THE KEY ADVANTAGES OF ACCUFORM

Accuform panels are designed and engineered to be economical and easy to install while maintaining projects unique architectural design concept. The panels are fabricated in a state-of-the-art manufacturing facility with the latest industry available technology and equipment.

The panels are fully formed on an automated line allowing us to provide the panels in a minimal lead time, at a competitive price, while maintaining extreme precision and quality.

Accuform is a metal plate system, meaning it is non-combustible and fully recyclable upon the end of its life. Accuform can accommodate various depth projections, allowing designers to create unique facades.

Panel corners are mechanically formed butt-jointed when using pre-finished material.



THE SYSTEM

Accuform is a rain-screen panel system. Compliant to All North American codes for non-combustible construction and is a concealed, nonvisible fastened dry joint system. While being a cost-effective panel system, the speed and simplicity of hook over rail installation brings further savings in productivity. If code or specification requires non-combustible construction Accuform is a clear choice.

This cassette style plate panel system has all interlocking edges bent from one peice of metal. Ancillary cap profiles allow the panels to be cut on site to suit the job, with caps painted to match the panel finish eliminating typical flashing termination details.



ACCUFORM RAINSCREEN'S MOISTURE MANAGEMENT SYSTEM

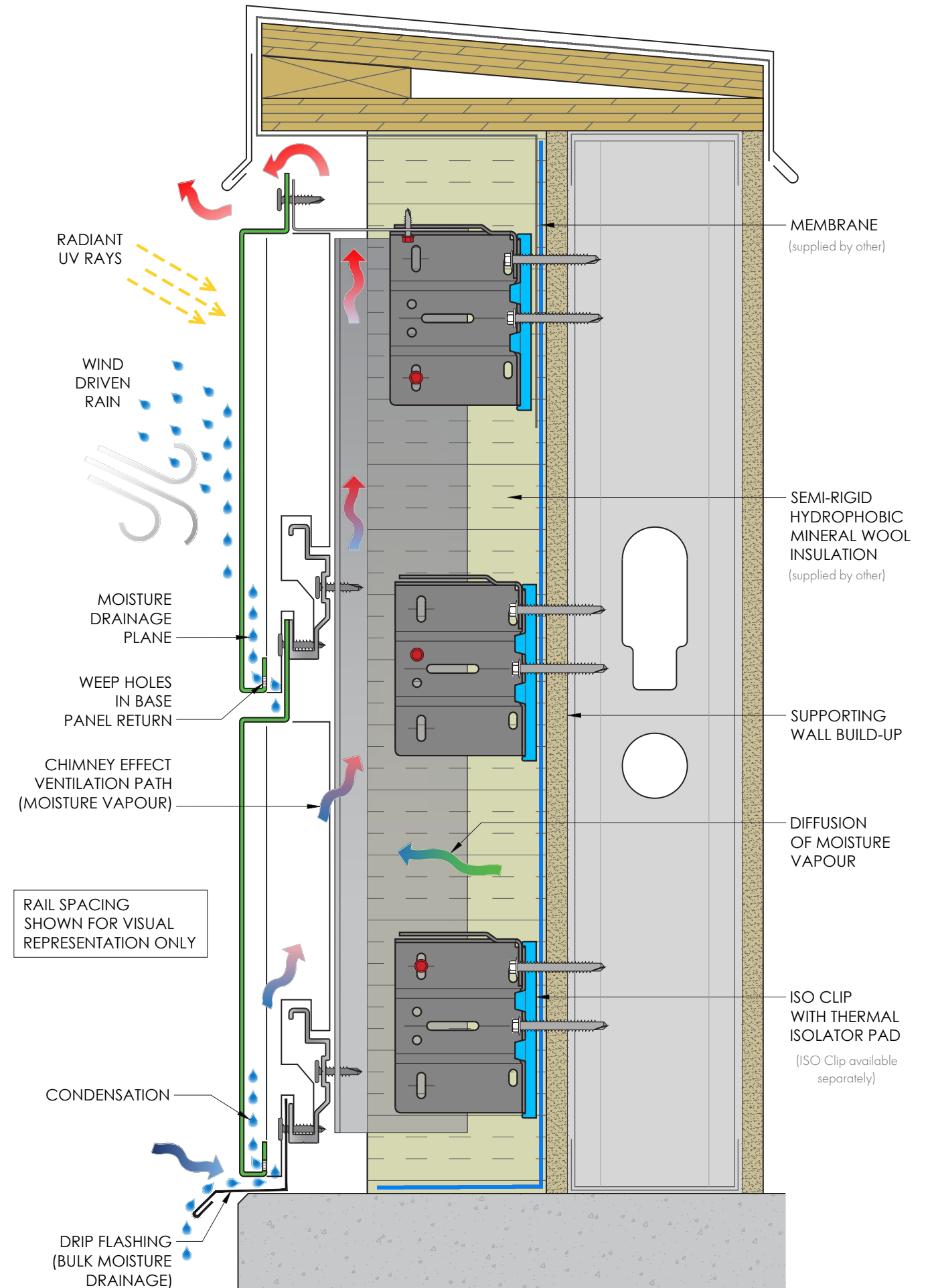
A rainscreen is defined as an assembly applied to an exterior wall which consists of, at minimum, an outer layer, an inner layer, and a cavity between them sufficient for the passive removal of liquid water and water vapor.

Accuform rainscreen system is effective at managing moisture and provides exceptional opportunities for energy-efficient performance combined with continuous insulation to mitigate thermal bridging.

ACCUFORM AND NET ZERO ENERGY READY PERFORMANCE

Accuform system when combined with a thermally broken cladding attachment system, such as ISO Clip, can meet the performance requirements of Net Zero Energy Ready buildings.

Accuform rainscreen system illustration



STANDARD PANEL OPTIONS

Accuform comes in standard panel sizes and colour options for quicker lead times. Refer to chart below for standard panel layout sizing options when designing your exterior facade layout.

Panel Sizing Options

		Width (in)			
		16	24	36	48
Height (in)	24	V	X	H	H
	36	V	V	X	H
	48	V	V	V	X
	60	V	V	V	
	72	V	V		
	84	V	V		

- X – Panel size works in both directions
- V – Panel size works in vertical applications
- H – Panel size works in horizontal applications
- * – Panels require intermediate clips at recommended spacing

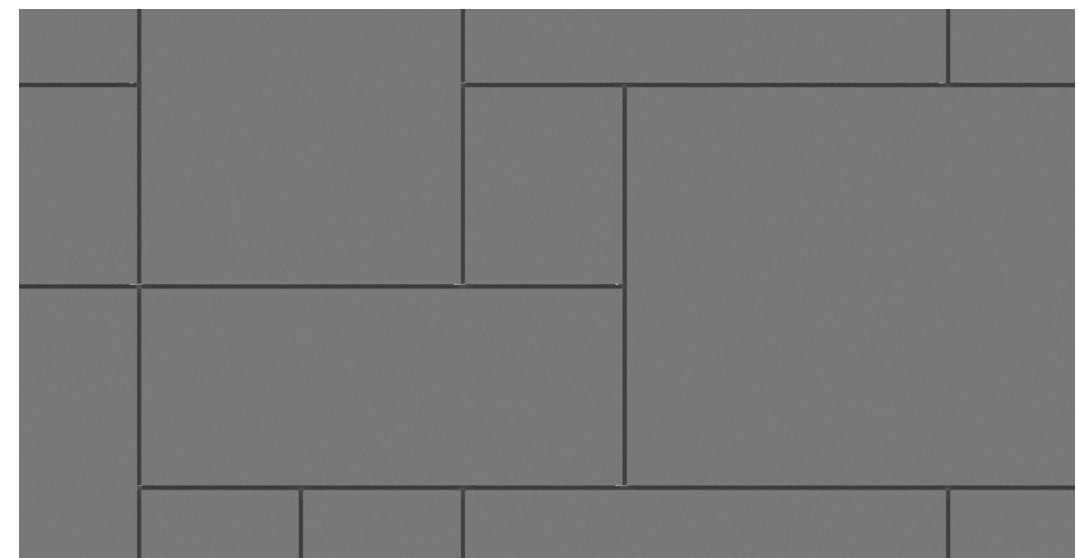
- Rails typically spaced at 24" o.c. vertically. Spacing may vary based on project requirements.
- Accuform's standard system depth is 2". For different panel system depths please contact Northern Facades for custom pricing.

SYSTEM BENEFITS

Accuform can be installed in a vertical or horizontal orientation. The standard system comes in a range of readily available colours. Please inquire about custom colour cost and lead times with Northern Facades.

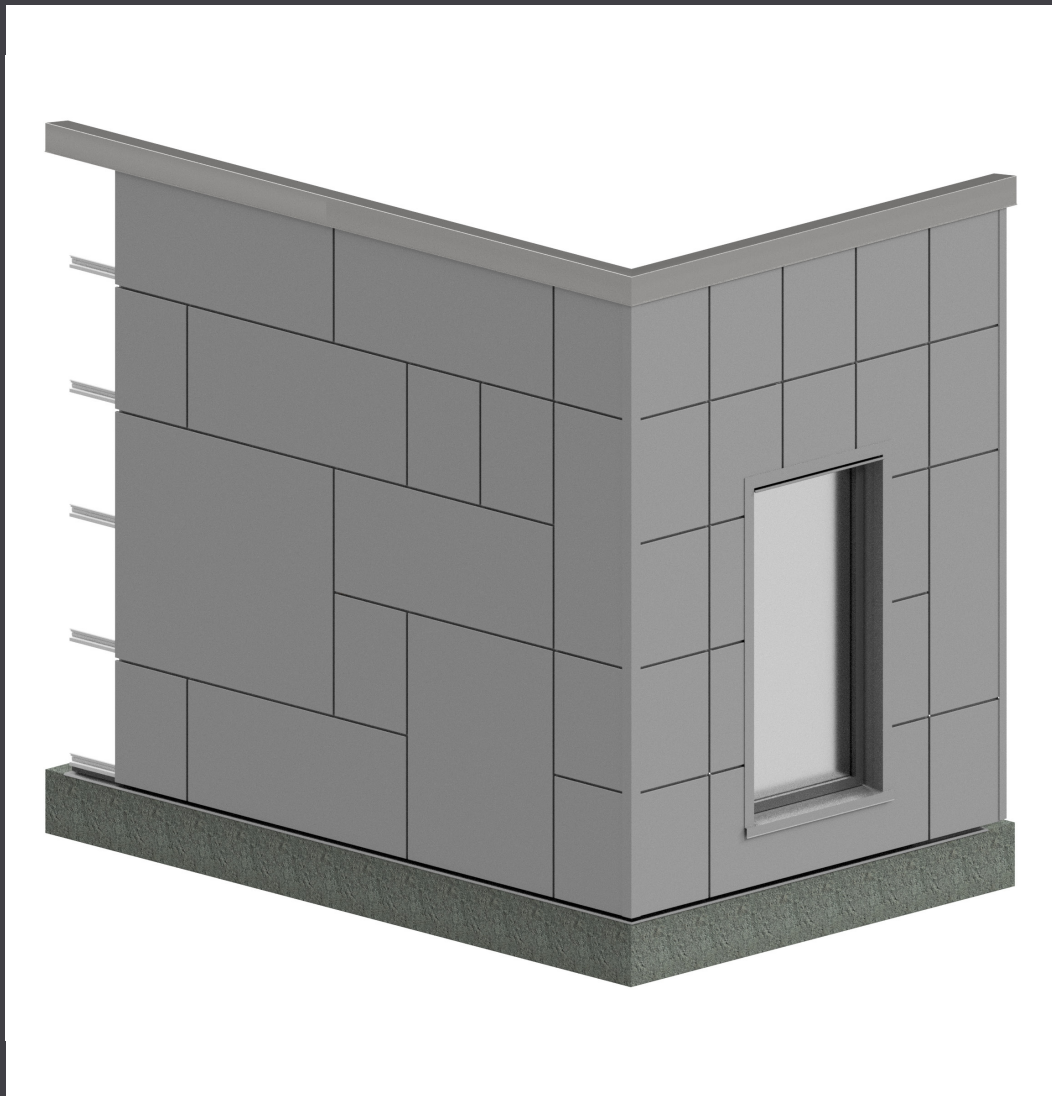
Key features to highlight:

- Interchangeable - Can be combined with other facade panel systems
- Standard panel sizes optimized for economical pricing and quick delivery
- Rapidly manufactured
- Quickly and easily installed in the field
- Made with no plastics, can be reused, refinished and recycled
- Non-combustible dry joint rain screen system
- Panel grid flexibility to achieve design intent

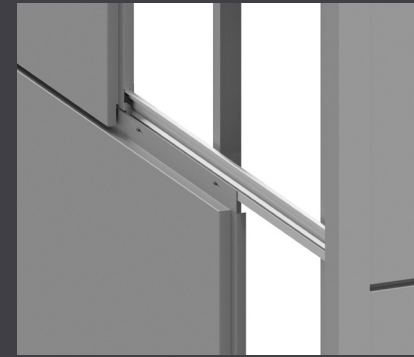


KEY SYSTEM FEATURES

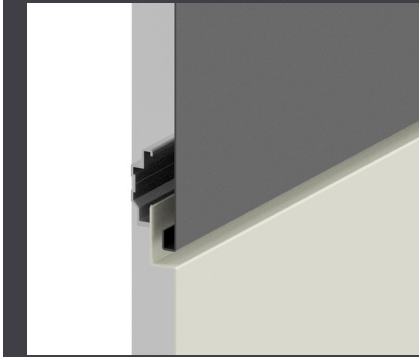
Bringing your architectural concepts to reality



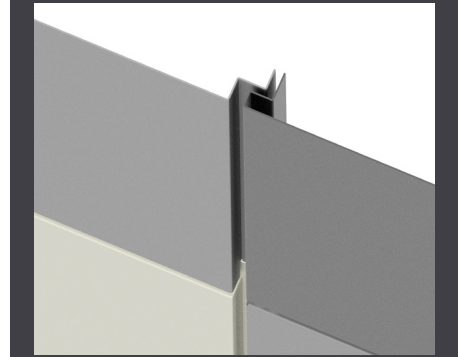
Horizontal Joint Section



Horizontal Joint



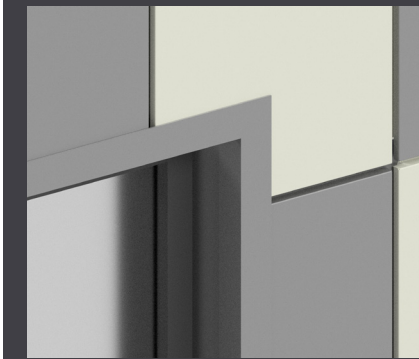
Vertical Joint



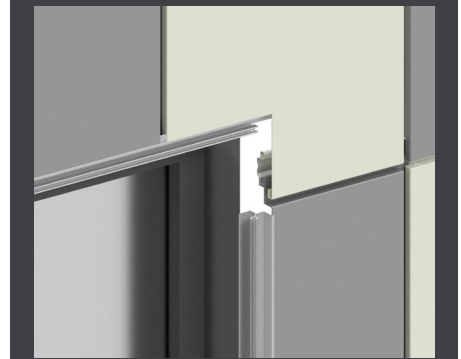
Four Way Joint



Window Parameter Trim



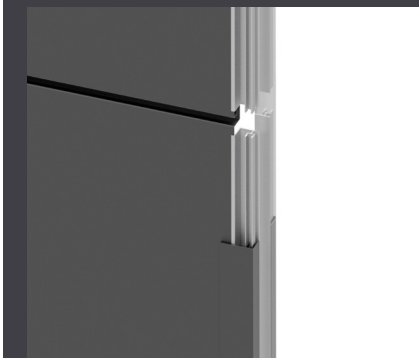
Window Without Parameter Trim



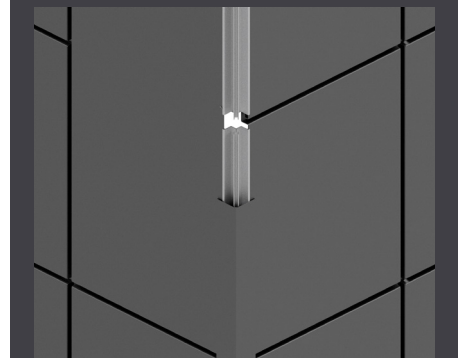
Termination and Coping Trim



End Trim



Corner Trim



COLOUR OPTIONS

Limitless Colour Options

With limitless pre-painted color options by our verified code compliant coil vender network, you can mix and match and source custom colours with ease ensuring your beautiful façade will live its life , full out in Colour. Our pre painted coils are sourced in 2mm (0.08”) and are non-combustible. Reach out to a Northern Facades representative for a complete list of verified and preferred supplier colour charts and for ordering samples to see the true finish before specifying.

STANDARD COLOUR OPTIONS

Stock Colours

New-Age Dark Bronze Mica	JLR Champagne Metallic
Bone White	Anodic Clear Mica
Focus Black II	West Pewter Mica II
JLR Gray Metallic	Dusty Charcoal II

Standard Colours

Alabaster	Oyster
Castle Gray	Cadet Gray
Statuary Bronze	Platinum Mica
Silver Metallic	Sunrise Silver Metallic II

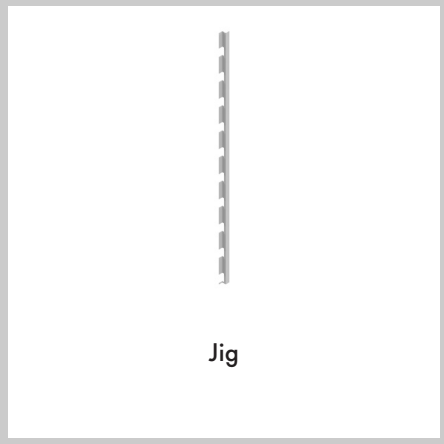
Further Colour Options

Please contact your local Northern Facades rep for lead times, minimum order quantities, and custom colour match requests.

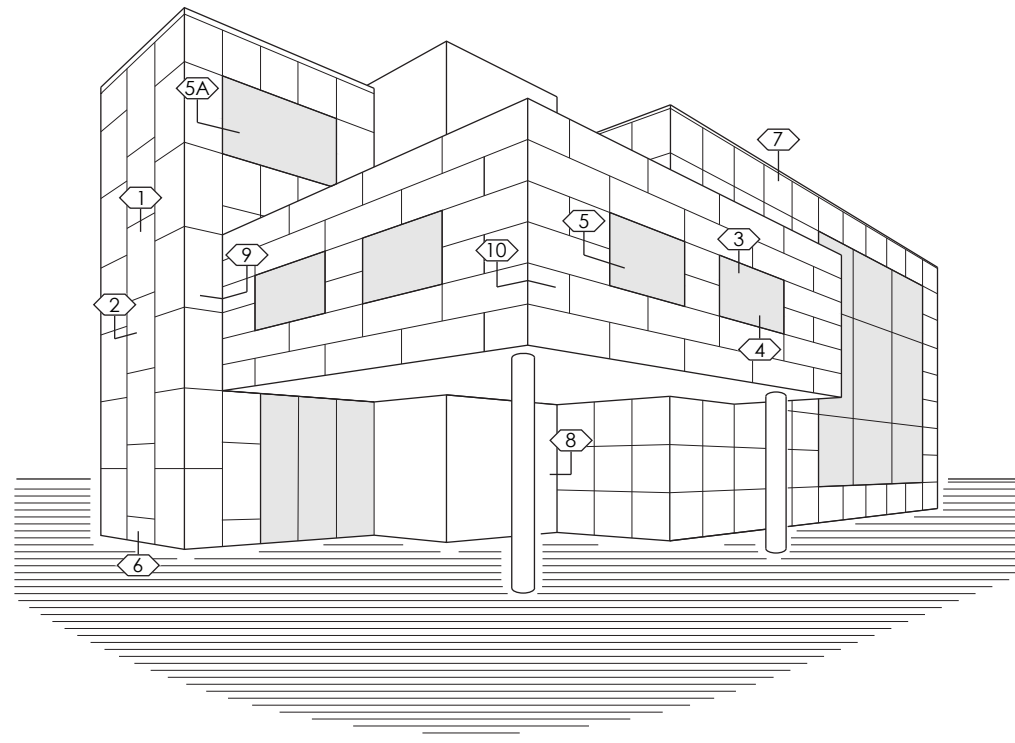
Driftwood Mica	Atacama Bronze Metallic	Terracotta	Native Copper Mica
Colorado Gold Metallic	Bronze	Hazelnut Mica	Almandine Garnet Metallic
Russet Mica	Harvest Gold Mica	Olivine Metallic	Epernay Champagne Metallic
Anodic Satin Mica	Sierra Sand	Beige	Aragonite Metallic
White Gold	Moonstone Metallic	Magnolia	HWH Bio White
Pure White - RVW	Arctic Frost	Bunny Grey II	Brilliant Silver Metallic
Champagne Metallic	Beachstone Gray Metallic	MZG Gray Mica II	Steel City Silver Mica
Slate	Graphite Mica	Serpentine Metallic	Cubanite Metallic
Anthracite Silver Metallic	Nissan Gray	Basalt Gray	Greyhound
Darkened Gray	Tri-Corn Black	Black Metallic	Lava Nera
Spire Blue II	Azure Blue	Ultramarine Blue	Ocean
Bowtie Blue II	Image Blue	Galaxy Blue	Sakura
Tuscan Sun	Cupral	Carb Red	Patriot Red
Red Fire			

INSTALLATION COMPONENT PARTS

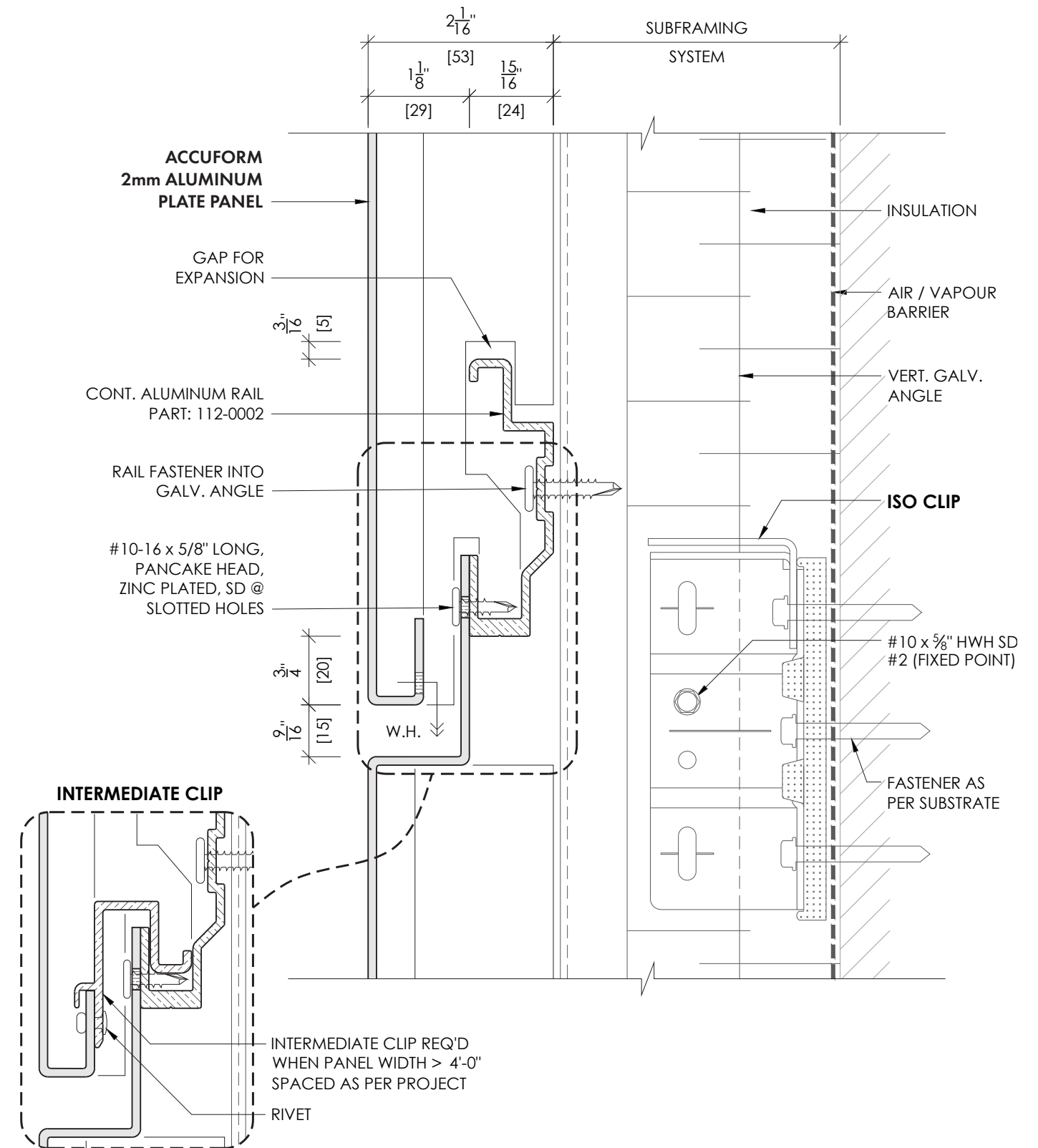
WITH OUR CUSTOM EXTRUSIONS AND PARTS, YOU CAN ACHIEVE A CLEAN AND POLISHED LOOK, WITH THE HIGHEST LEVEL OF QUALITY AND PRECISION.



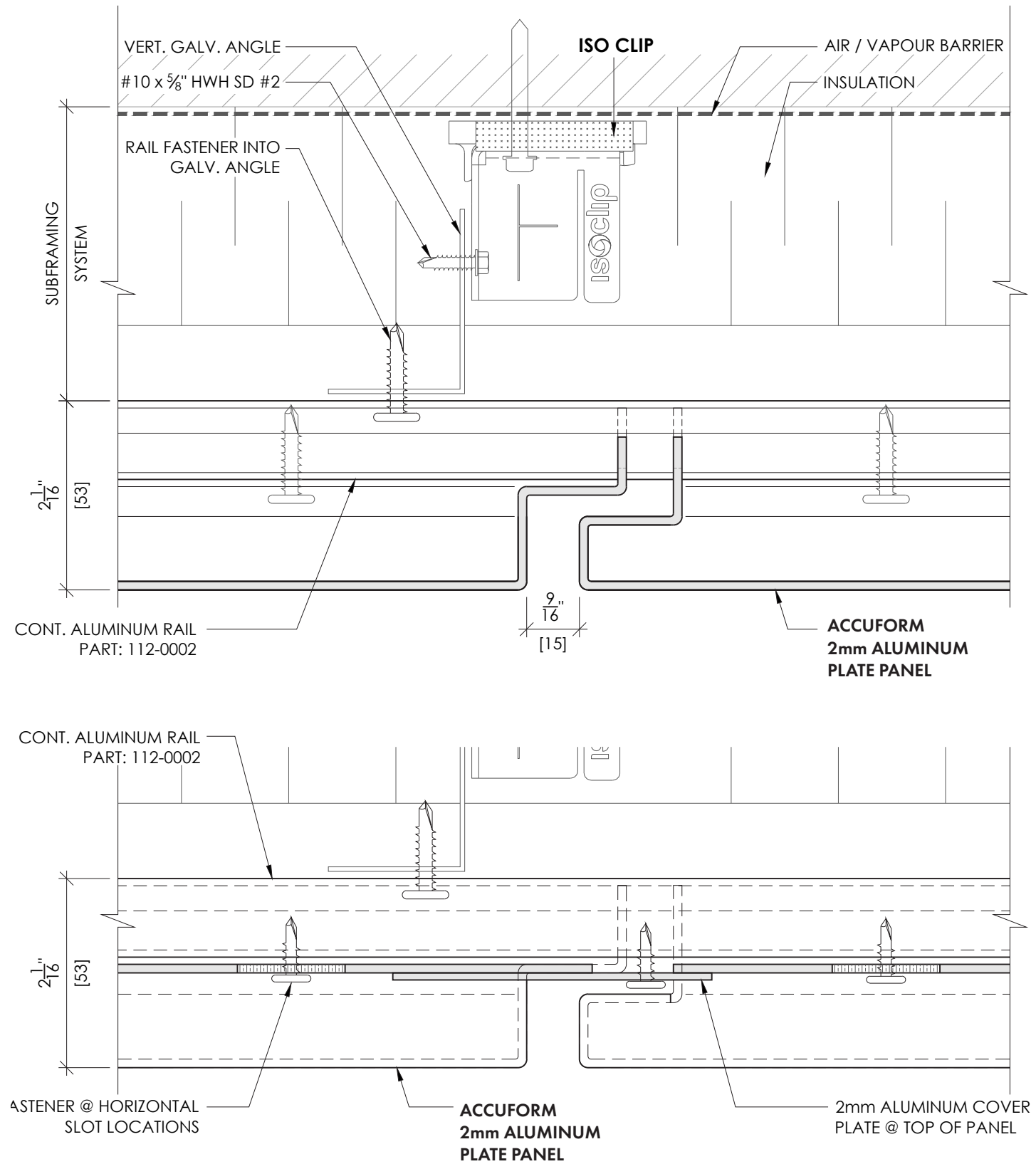
TYPICAL DETAILS



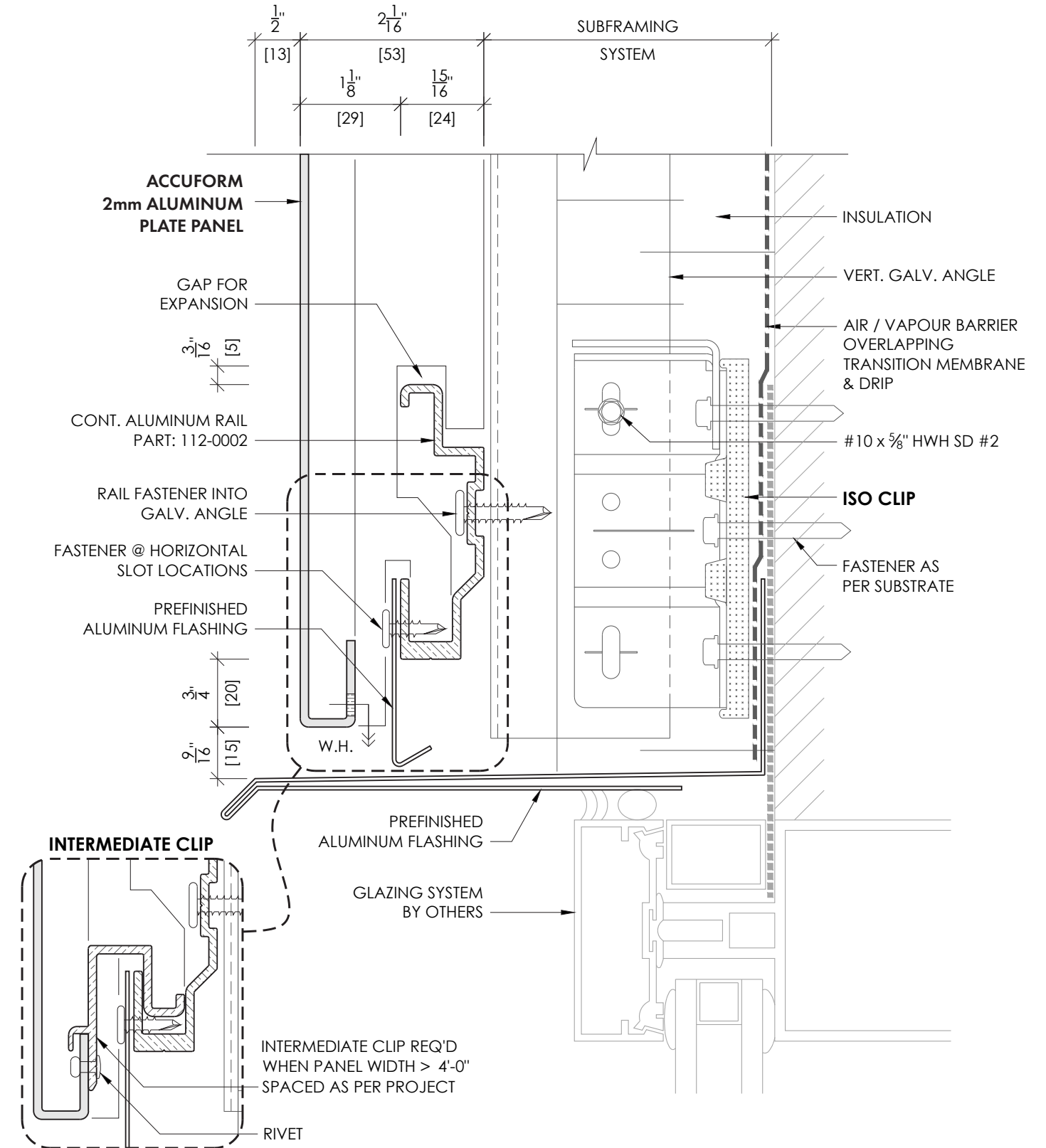
DETAIL 1 - Horizontal Joint



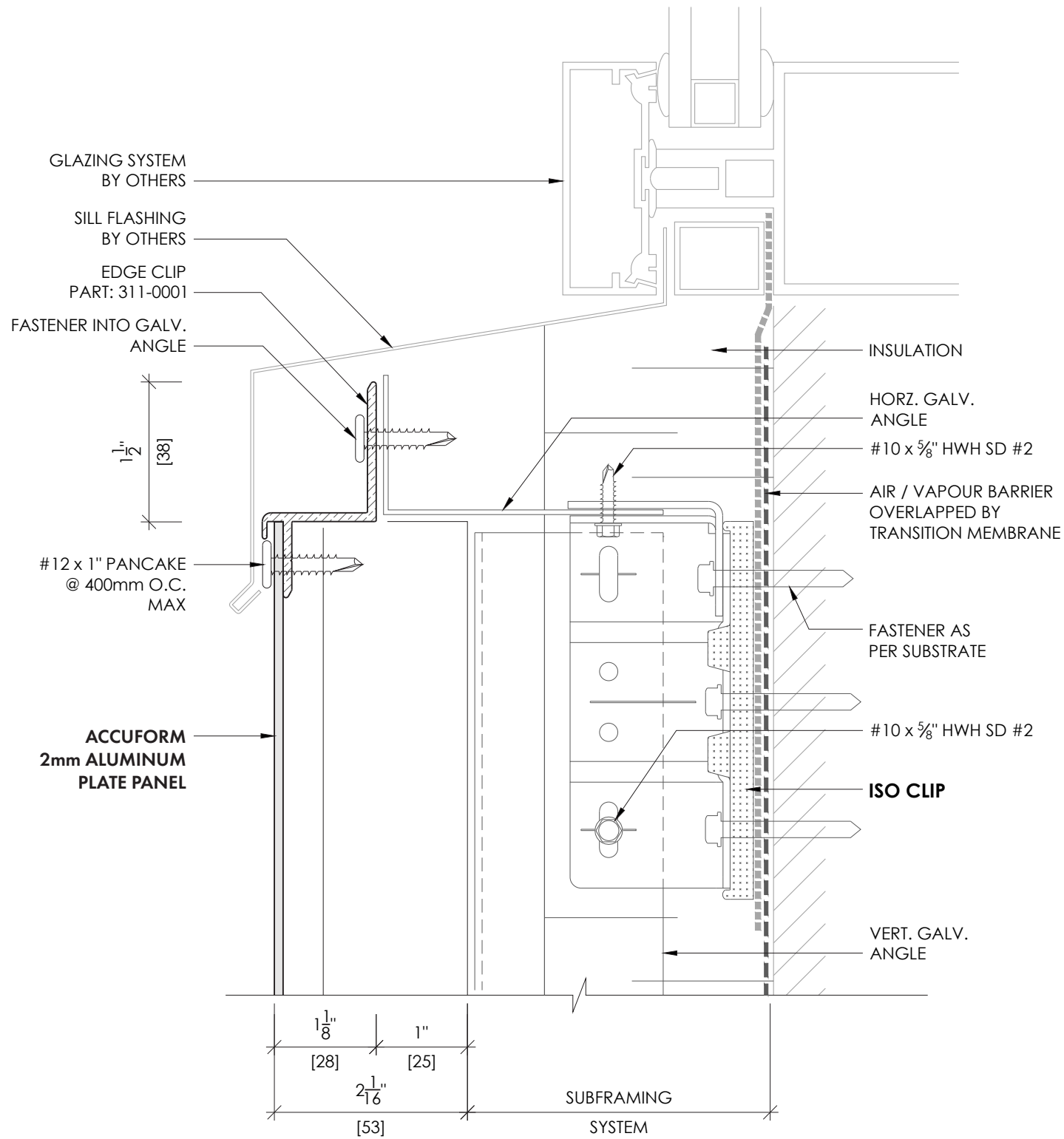
DETAIL 2 - Vertical Joint



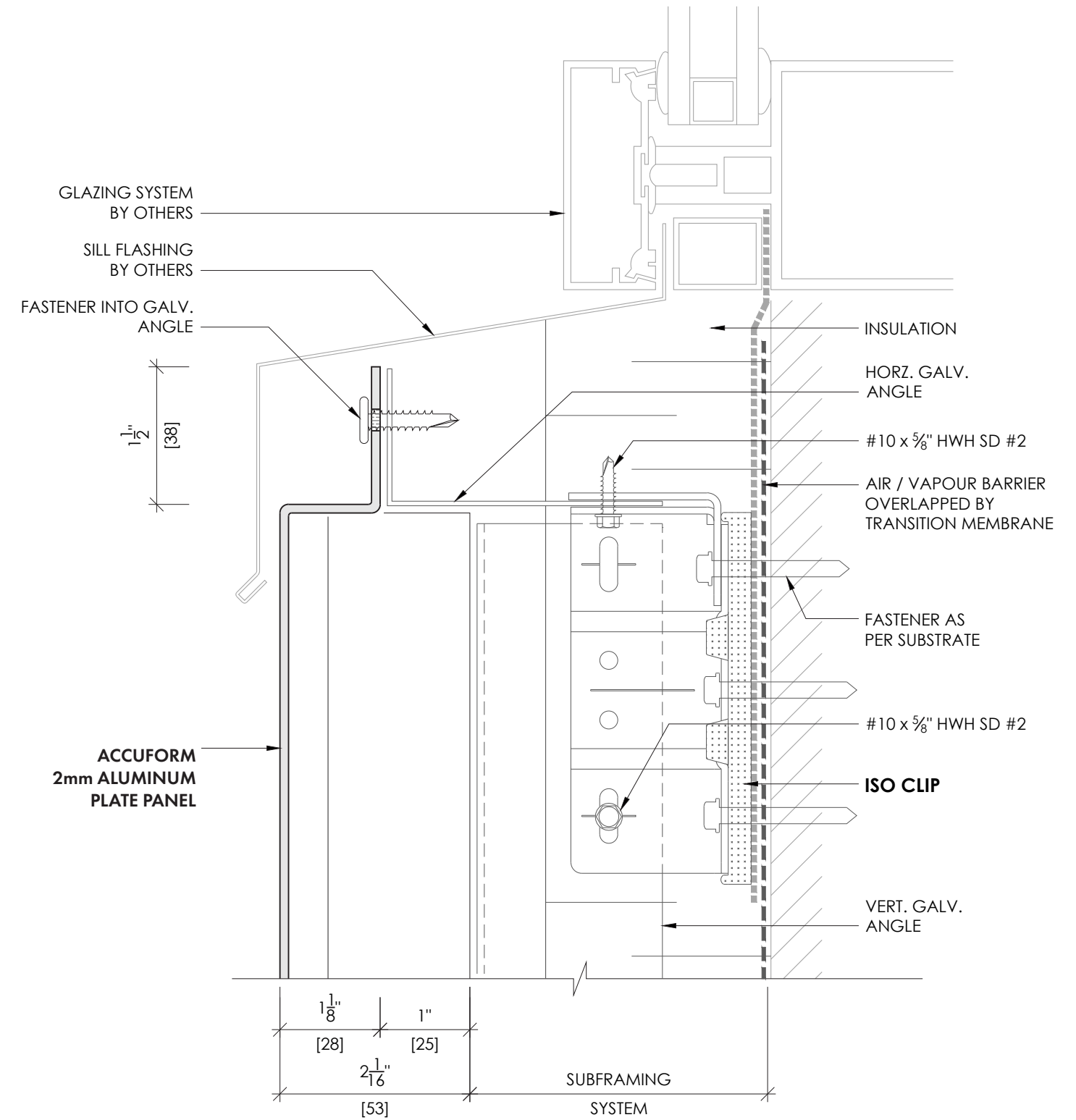
DETAIL 3 - Window Head



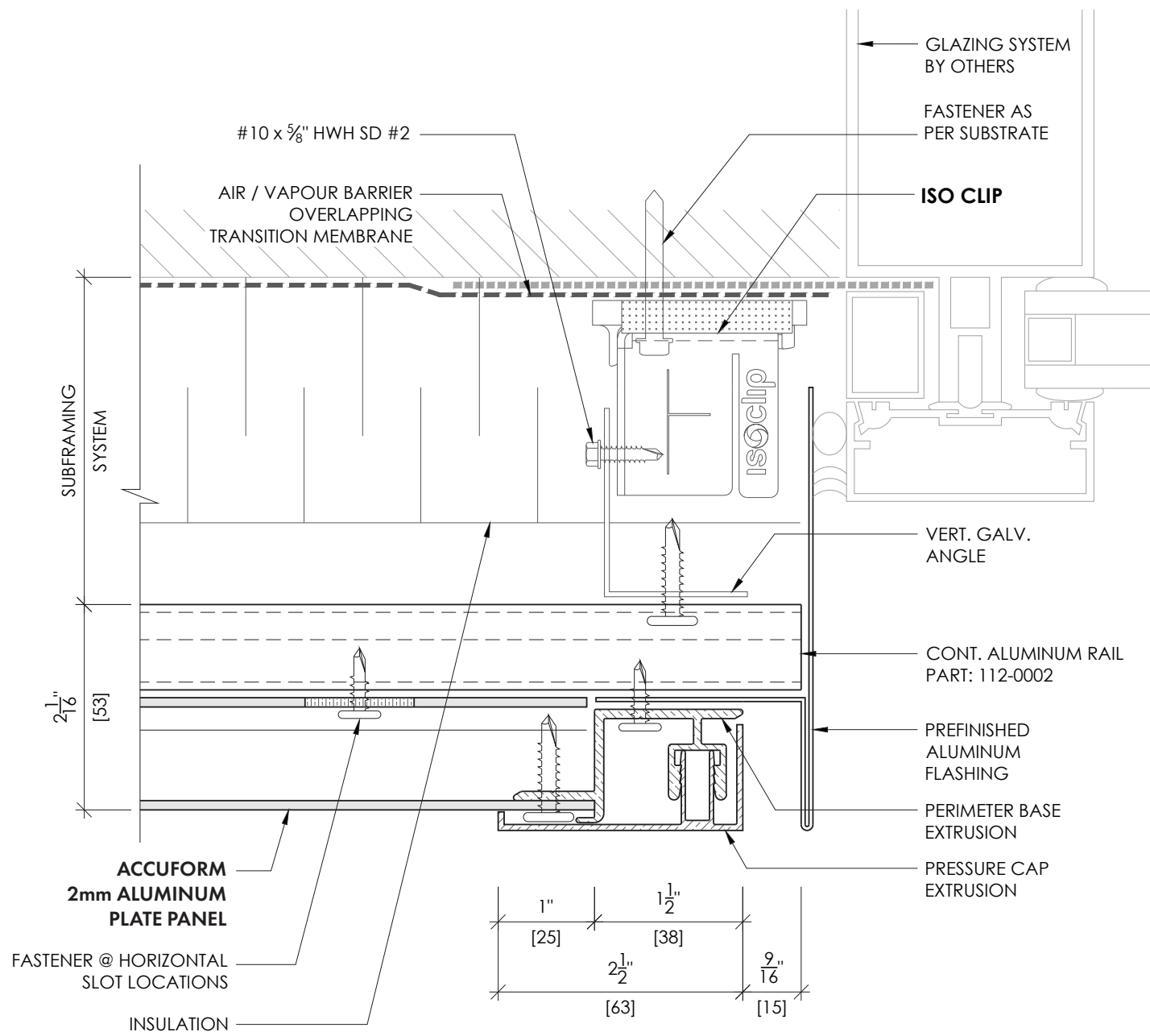
DETAIL 4 - Window Sill



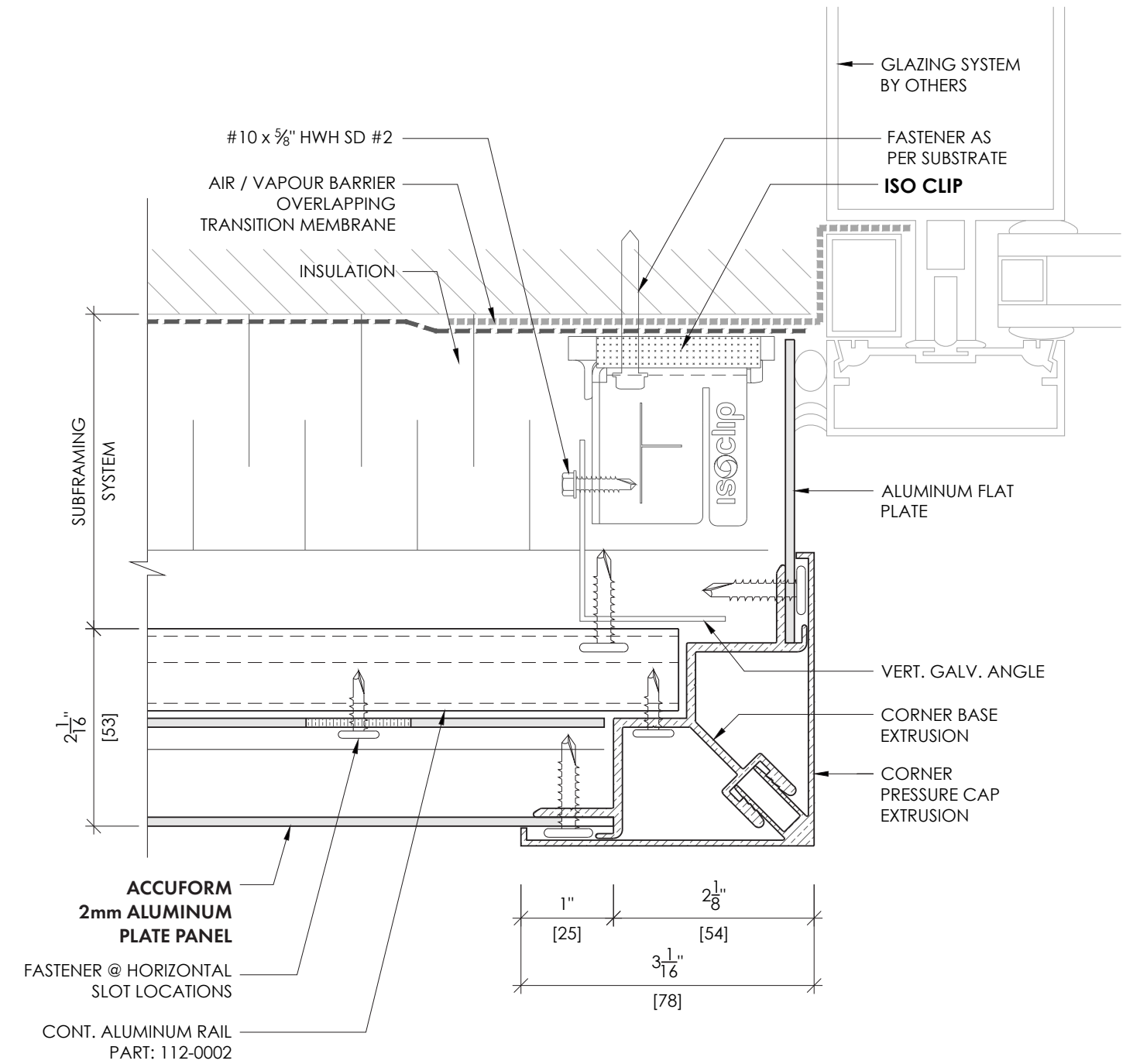
DETAIL 4A - Window Sill



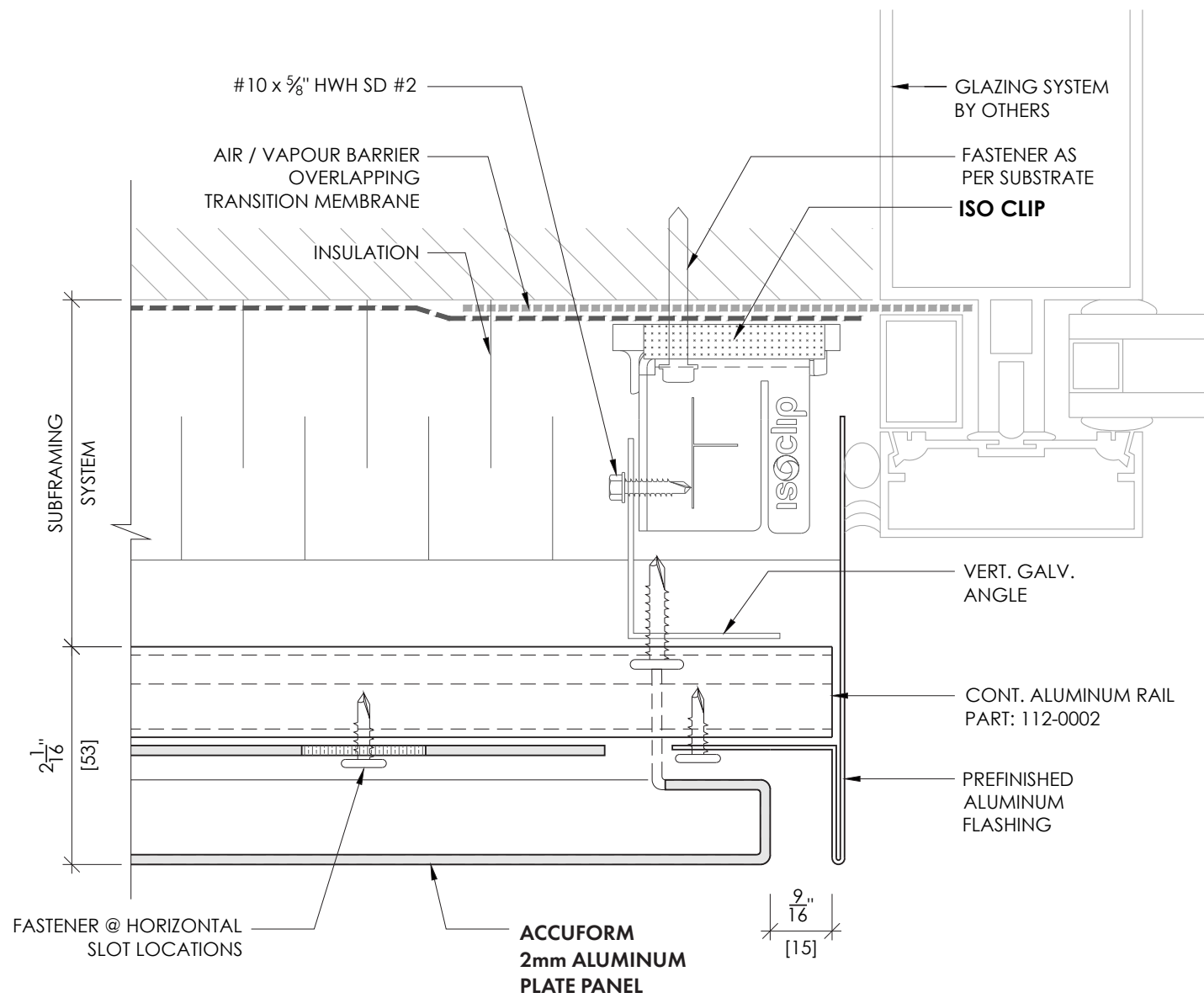
DETAIL 5 - Window Jamb



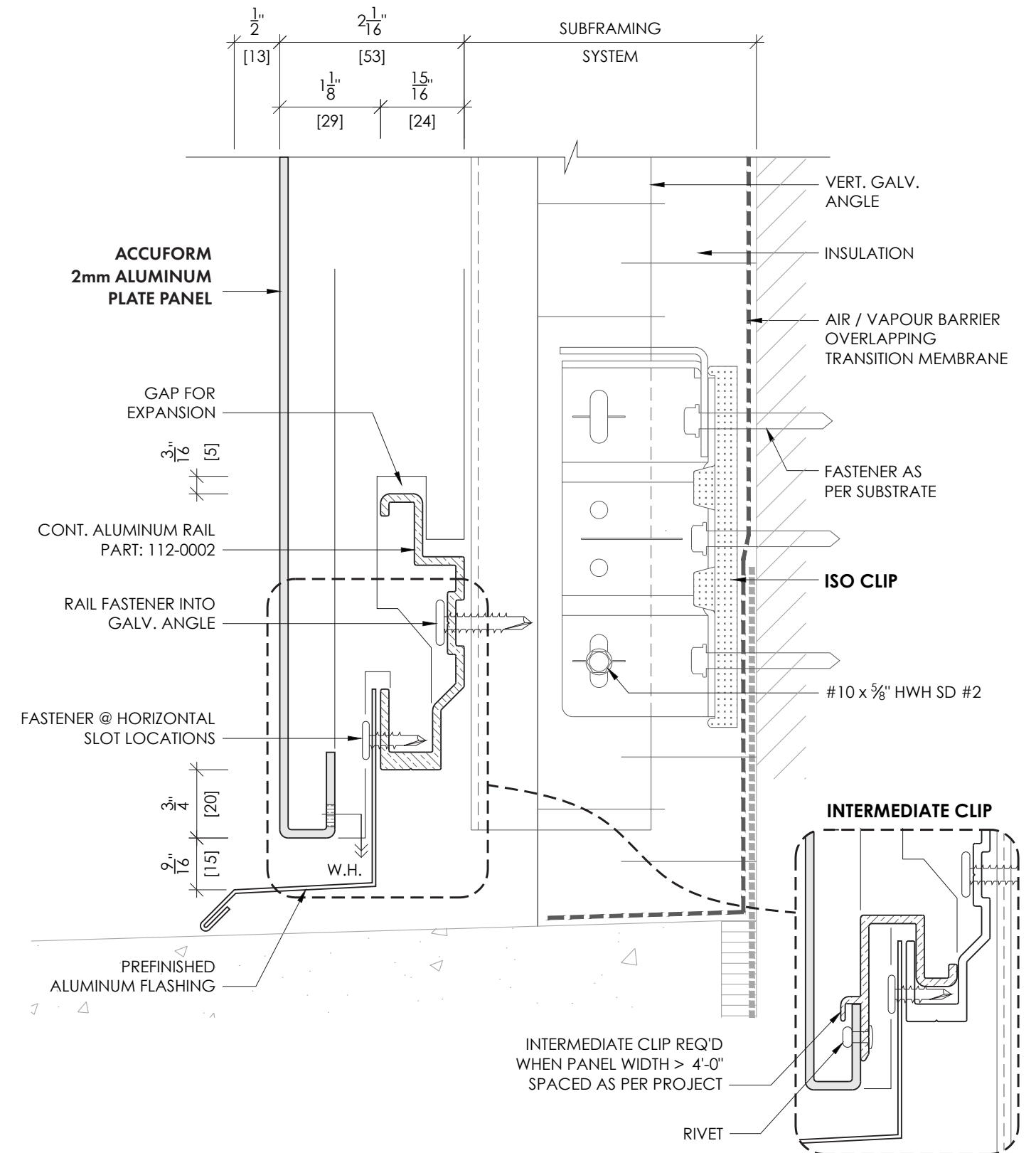
DETAIL 5A - Window Jamb



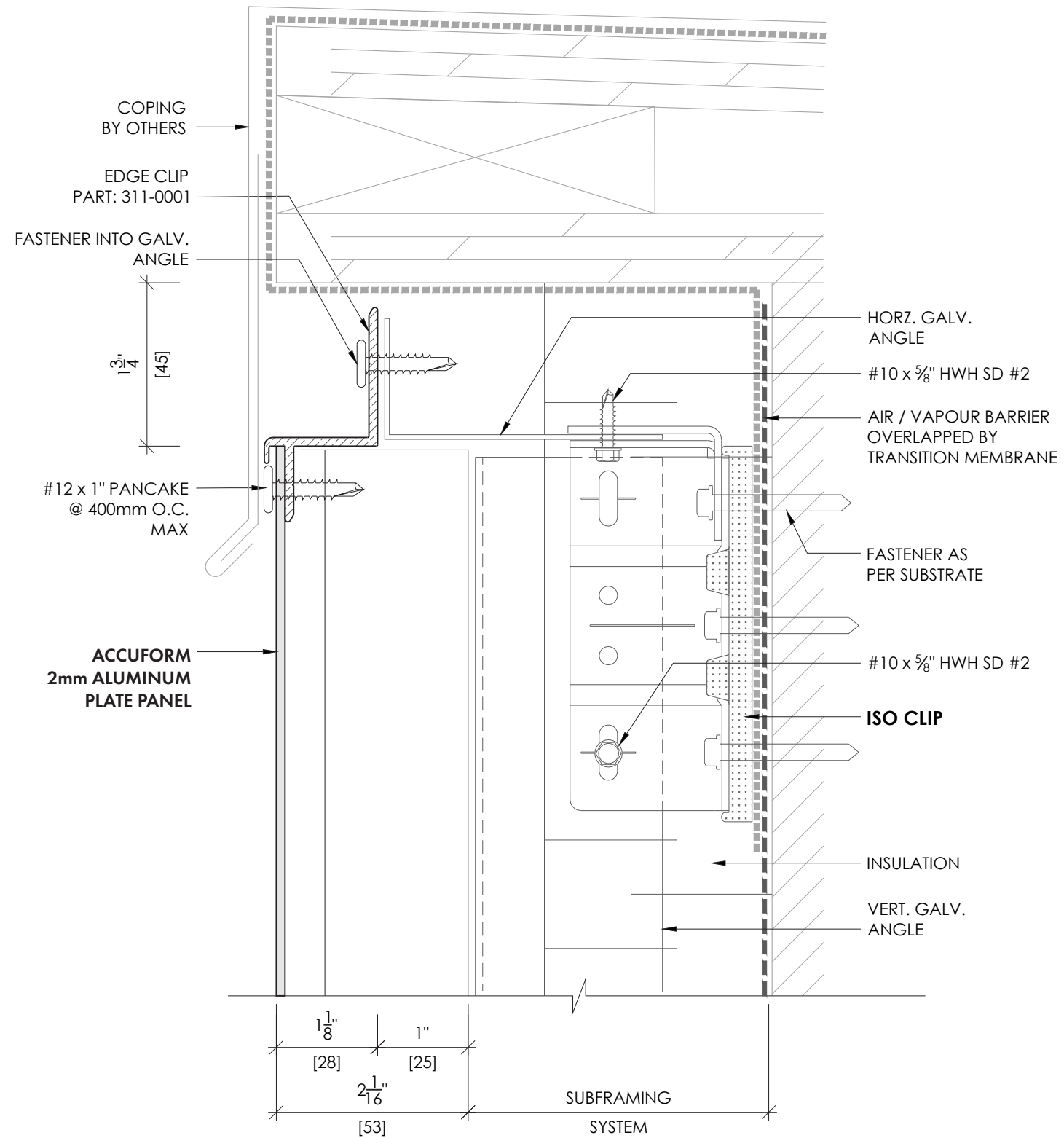
DETAIL 5B - Window Jamb



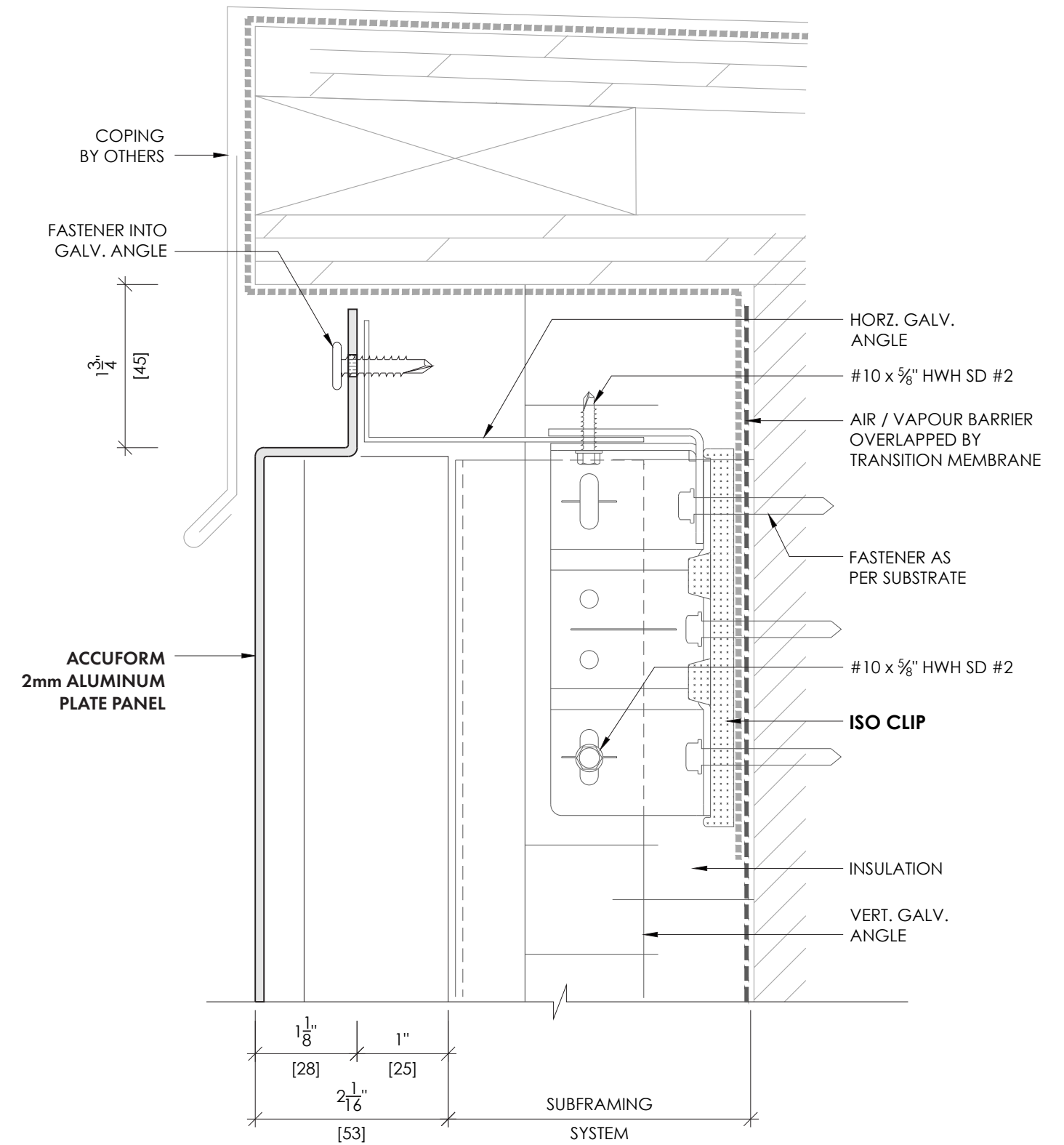
DETAIL 6 - Base Detail



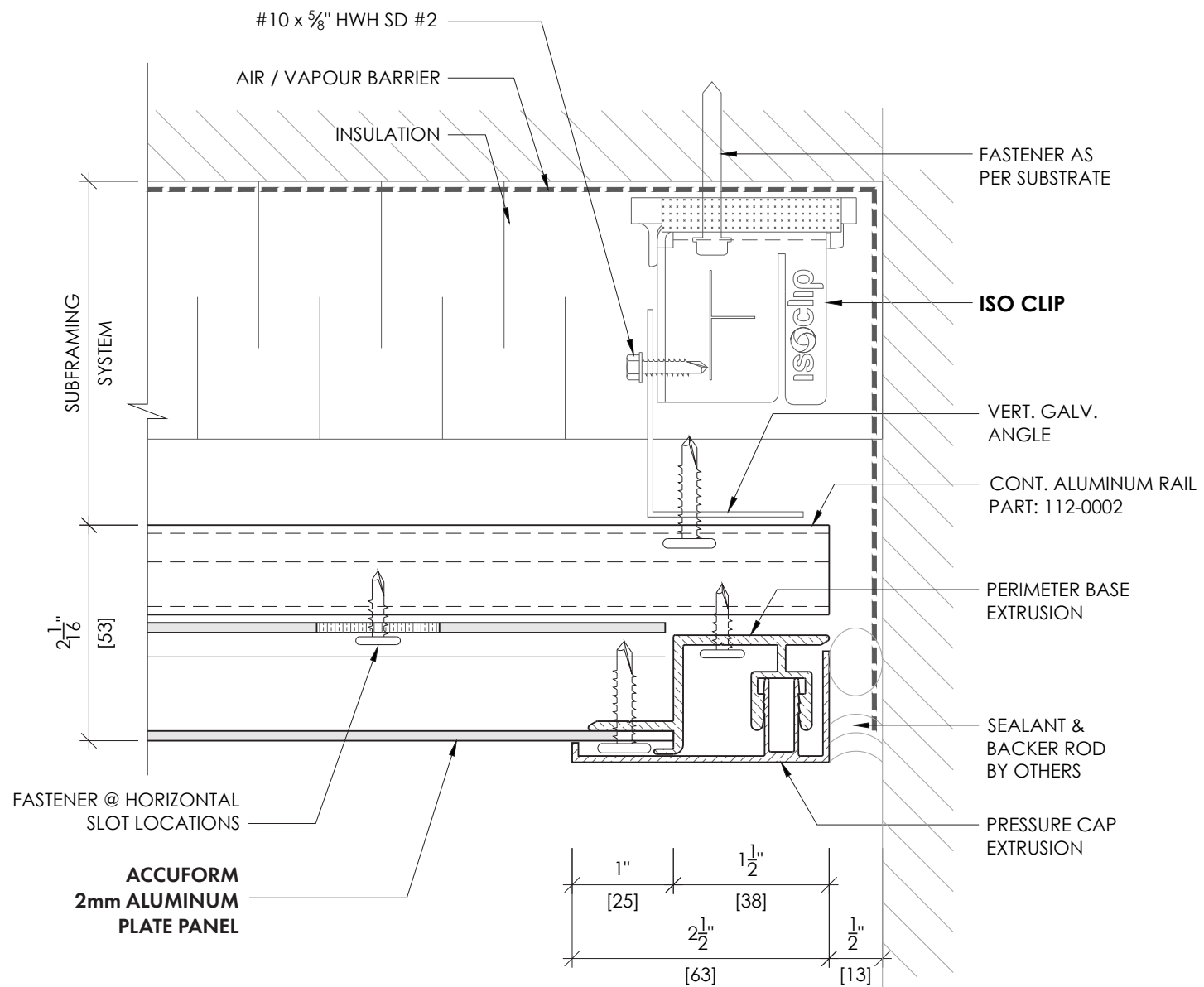
DETAIL 7 - Parapet Detail



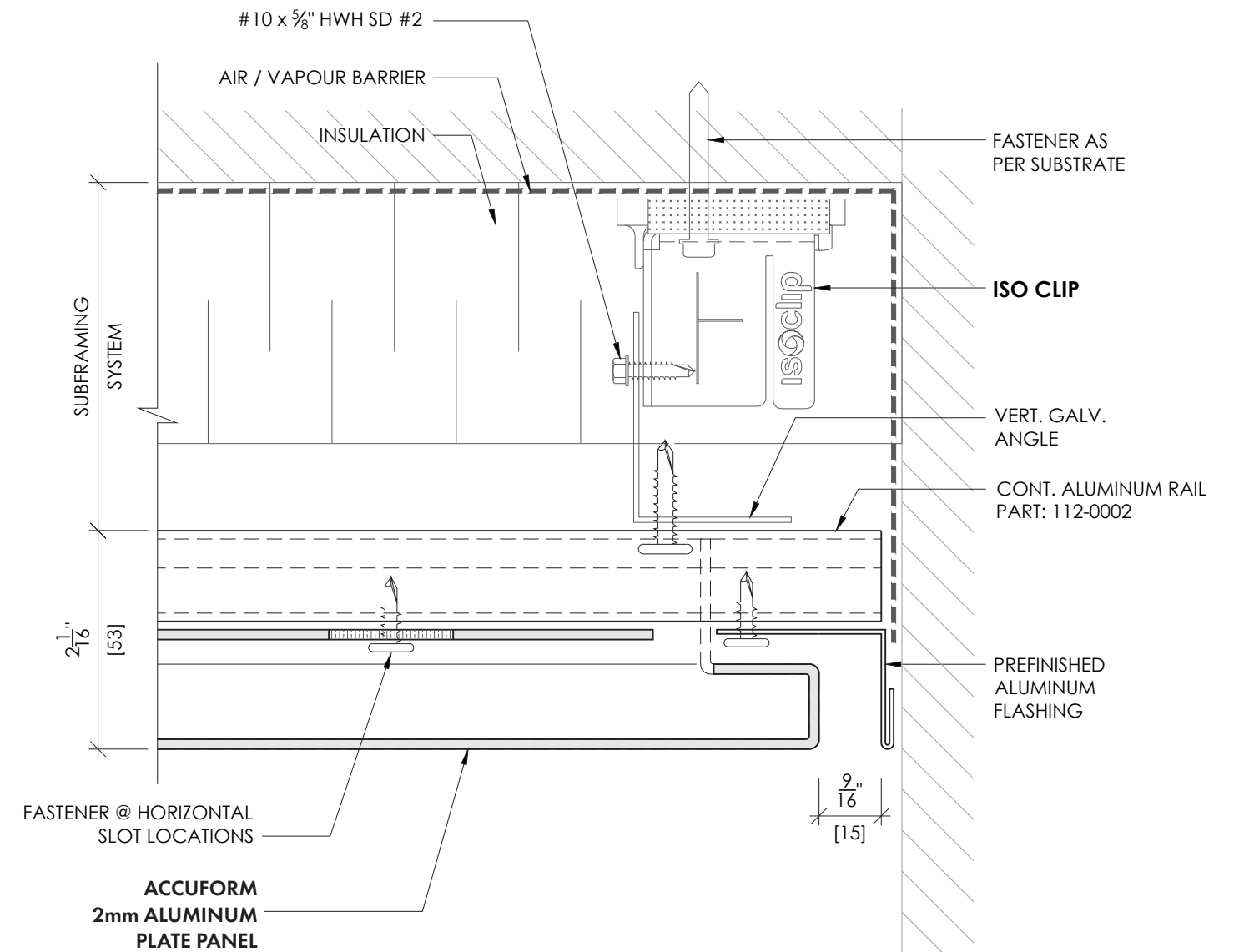
DETAIL 7A - Parapet Detail



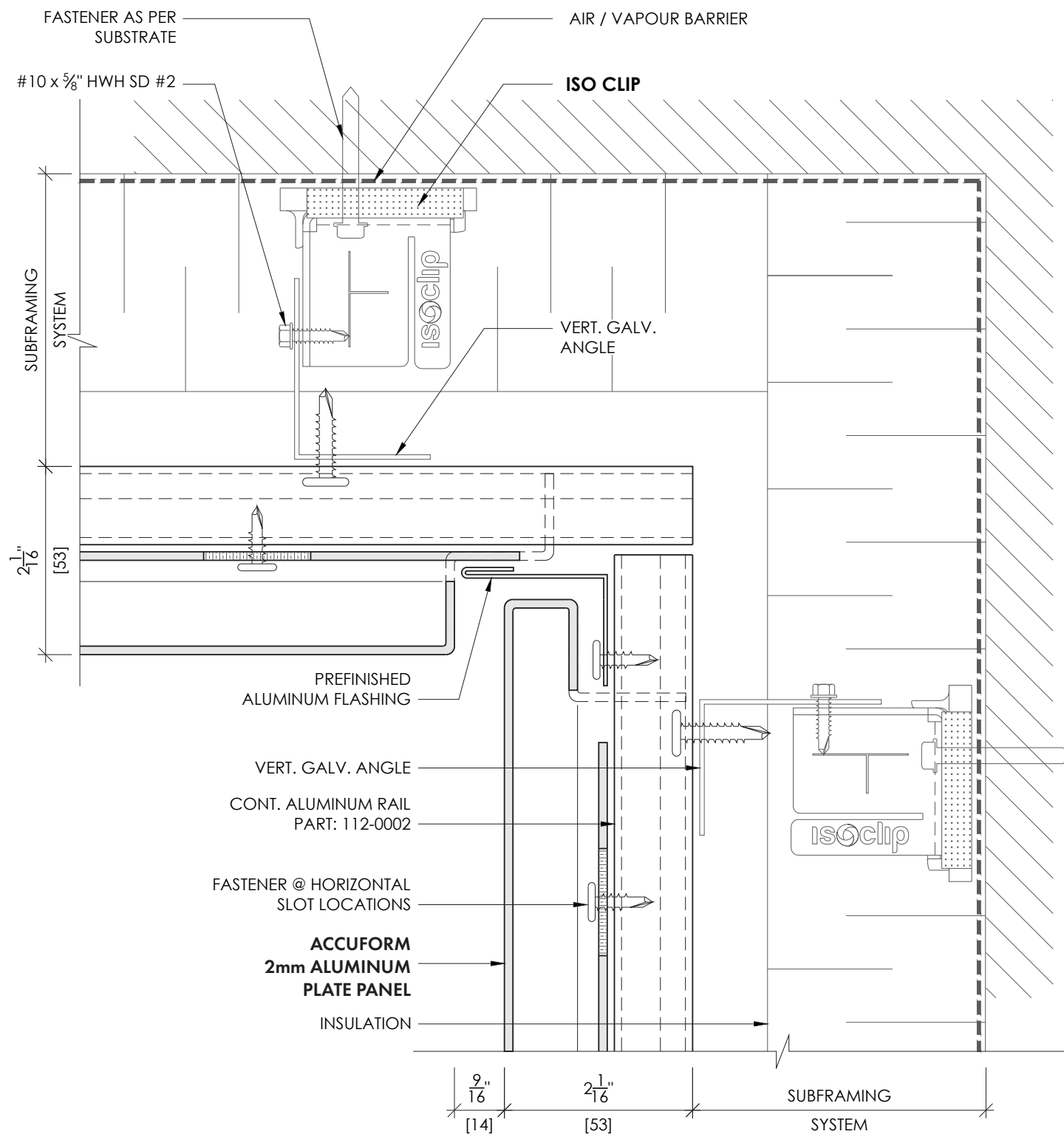
DETAIL 8 - End Detail



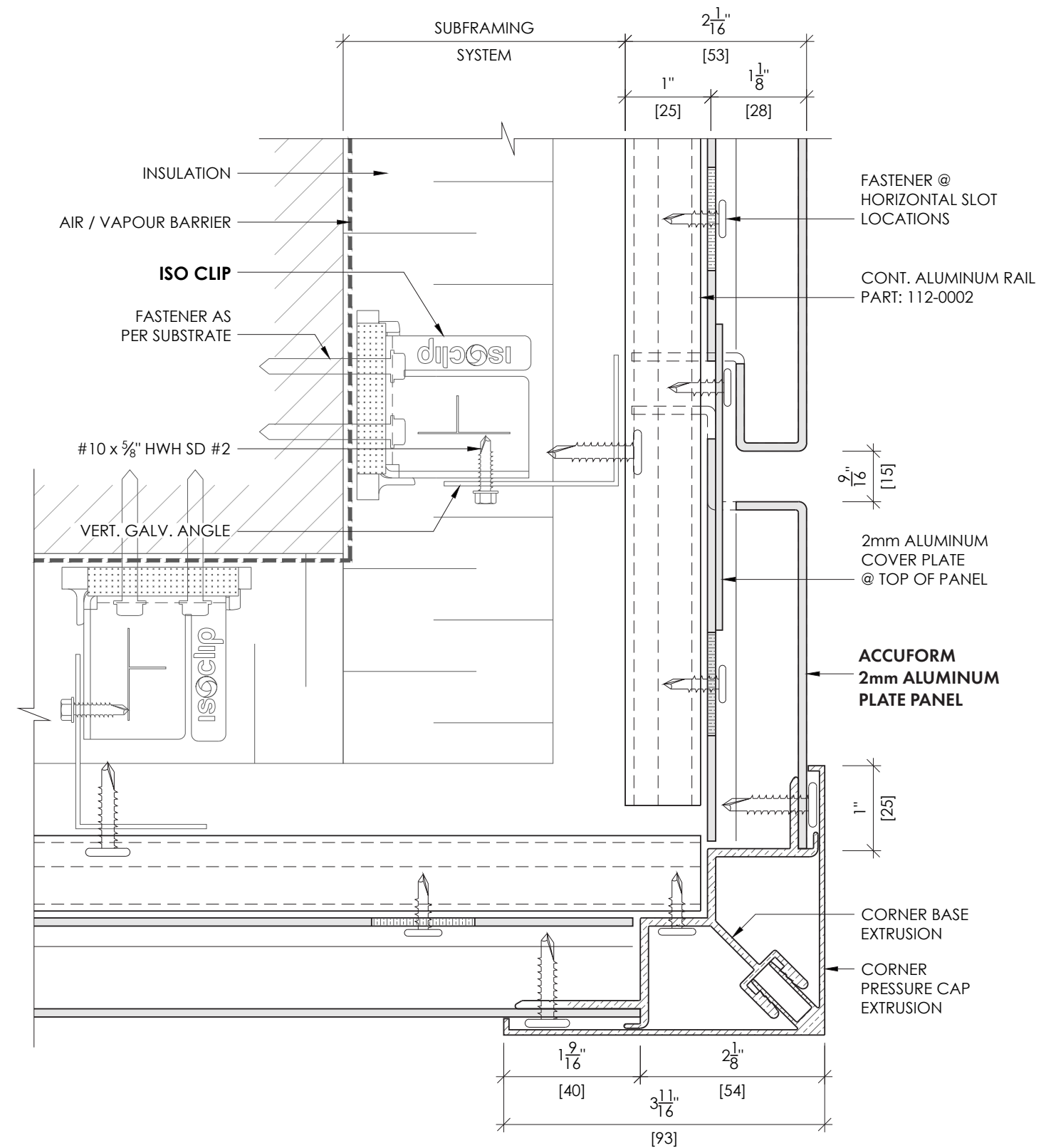
DETAIL 8A - End Detail



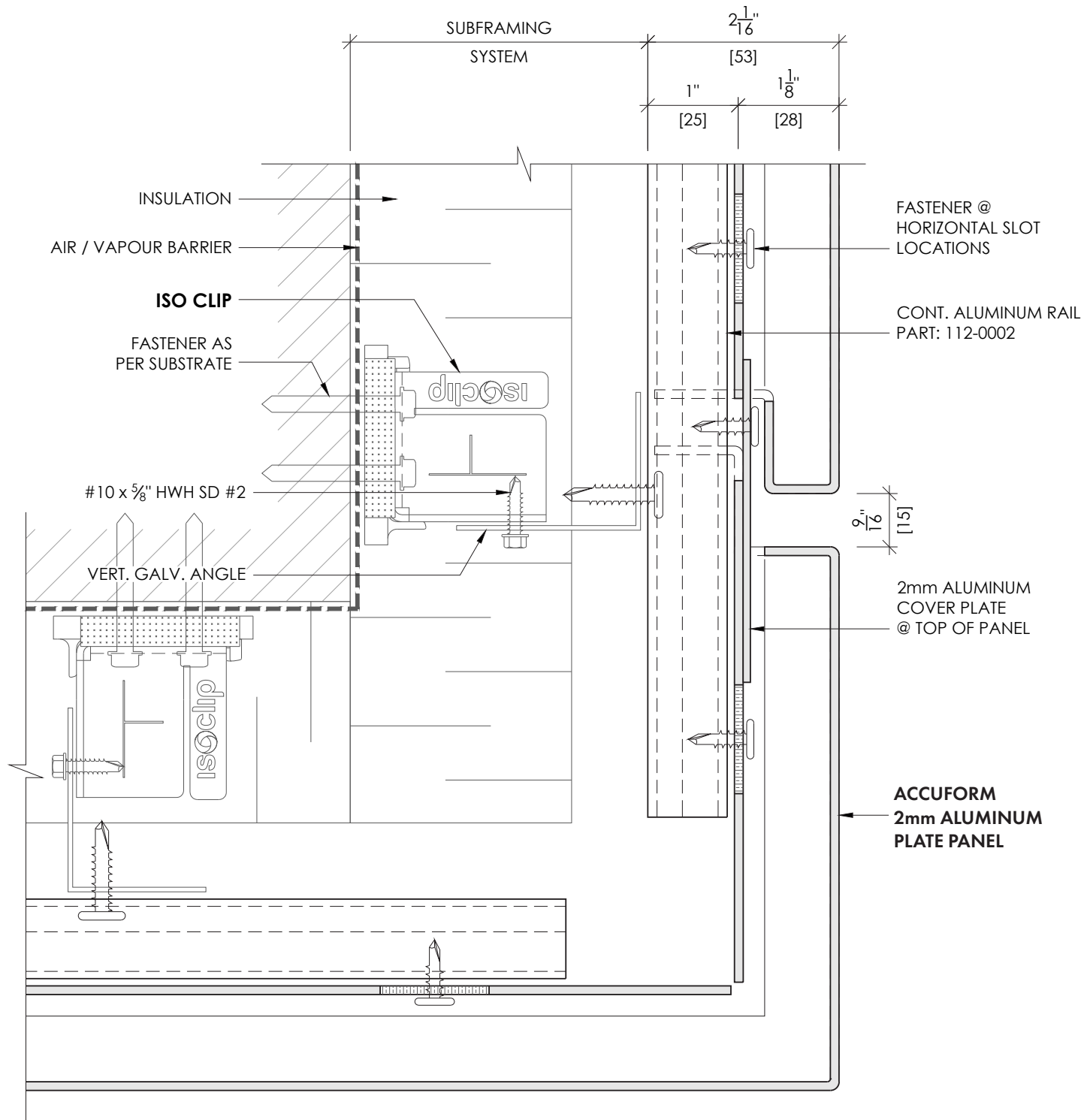
DETAIL 9 - Inside Corner Detail



DETAIL 10 - Outside Corner Detail



DETAIL 10A - Outside Corner Detail



TECHNICAL INFORMATION

Material Thickness	2mm or 0.08"
System depth	2" Nominal
Reveal Width	$\frac{1}{2}$ " Nominal
Weight (PSF)	1.83 lb/ft ² (Metal plate + Rail)
Aluminum Alloy	3003 H14
Testing	ASTM E84-18b – Standard Test Method for Surface Burning Characteristics of Building Materials
	ASTM E330/E330M-14 – Standard Test Method for Structural Performance of Exterior Windows, Doors, Skylights and Curtain Walls by Uniform Static Air Pressure Difference
	ASTM E331-00(2016) – Standard Test Method for Determining Rate of Air Leakage Through Exterior windows, Curtain Walls, and Doors Under Specified Pressure Difference Across the Specimen
	ASTM E1233/1233M-14 Standard Test Method for Structural Performance of Exterior Windows, Doors, Skylights, and Curtain Walls by Cyclic Air Pressure Differential
	AAMA 509-14 - Voluntary Test and Classification Method for Drained and Back Ventilated Rain Screen Wall Cladding Systems
	ASTM E283-04(2012) – Standard Test Method for Determining Rate of Air Leakage Through Exterior windows, Curtain Walls, and Doors Under Specified Pressure Difference Across the Specimen
Warranty	Northern Facades provides a 1 year workmanship Warranty
	Warranty is based on plate supplier and colour options. Reach out to your Northern Facades representative for warranty based on desired option.



Coil Certifications



Partnerships & Affiliations



Resources

Technical & Sales Support: info@northernfacades.com

You can also find us on:





Northern Facades
6451 Northwest Drive
Mississauga, ON L4V 1K2

northernfacades.com
1-844-740-2050
info@northernfacades.com

