

ACCUFORM

ECONOMICAL - SUSTAINABLE - FORWARD

07 42 13 ACCUFORM ALUMINUM PLATE PANELS

5 November 2024

TECHNICAL INFORMATION

MATERIAL

Accuform panels are designed and engineered to be economical and easy to install. They are fully formed on an automated line allowing us to provide the panels in a minimal lead time, at a competitive price, while maintaining extreme precision and quality.

The panels are formed from tension leveled architectural grade aluminum plate offered in a wide variety of 2mm pre-finished or post painted colors.

Accuform is a metal plate system, meaning it is non-combustible and fully recyclable upon the end of its life. The panel system depth ranges from 2" - 4" as part of our standard offering.

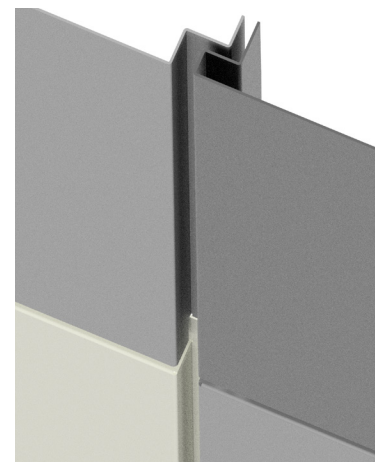
Panel corners are mechanically formed butt-jointed when using pre-finished material.



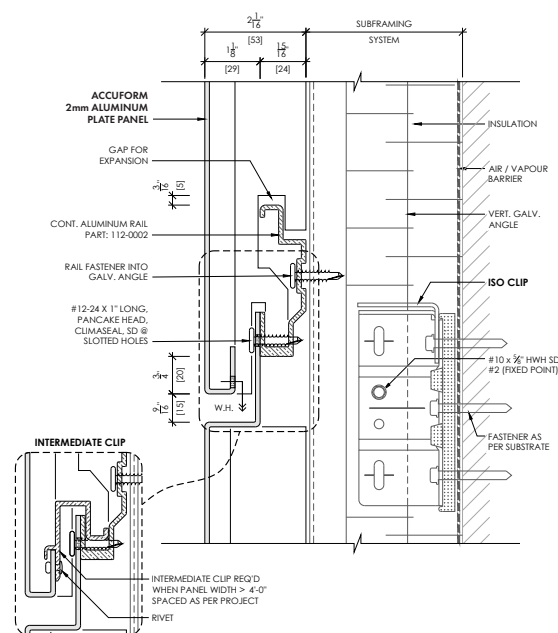
SYSTEM

Accuform is a rain-screen system with concealed fastening. Compliant to all North American Building Codes for non-combustible construction. While being a cost-effective panel system, the speed and simplicity of hook over rail installation brings further savings in productivity. If code or specification requires non-combustible construction Accuform is a clear choice.

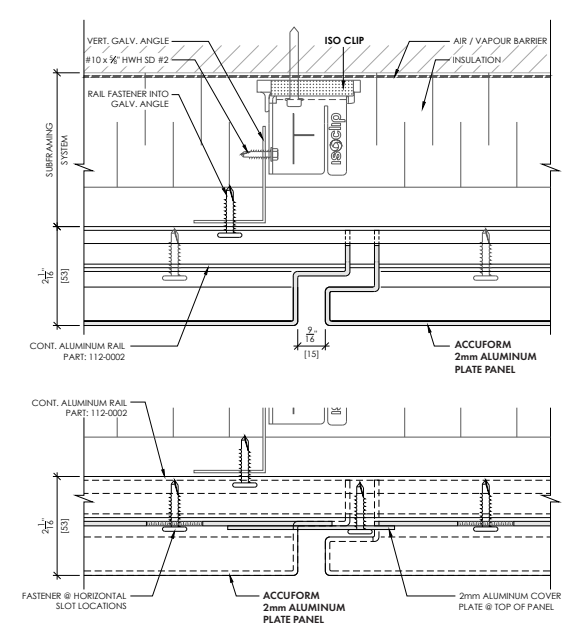
This cassette style plate panel system has all interlocking edges bent from one piece of metal. Our custom trim extrusions allow the panels to be cut on site to suit site conditions. With trims colour matched, designed to address cut panel and termination details.



Horizontal joint



Vertical joint



ACCUFORM

ECONOMICAL - SUSTAINABLE - FORWARD

BENEFITS

- Non-combustible dry joint rain screen system (DBVR) (PER).
- Economical.
- Simple quick installation.
- Accommodates thermal expansion and contraction.
- Panel Grid flexibility.
- Standard panel sizes optimized for economical pricing and quick delivery.
- Rapidly manufactured.
- Tested.
- Sustainable, can be reused, refinished or recycled.

AVAILABILITY & PRICING

- Pricing available through Northern Facades and authorized distributors
 - Fabricated by Northern Facades Ltd. In a state-of-the-art production facility
 - Project estimating, engineering, design assistance and 3D laser scanning service available
 - Project-specific pricing
 - Average material lead time for stock colours is 6-7 weeks*
 - Average material lead time for custom colours is 8-13 weeks*
- * Lead times vary due to supply chain constraints. Please check with Northern Facades consultant for current lead times

PANEL SIZING

		Width (in)			
		16	24	36	48
Height (in)	24	V	X	H	H
	36	V	V	X	H
	48	V	V	V	X
	60	V	V	V	
	72	V	V		
	84	V	V		

- X – Panel size works in both directions
- V – Panel size works in vertical applications
- H – Panel size works in horizontal applications
- * – Panels require intermediate clips at recommended spacing

TEST REFERENCES

ASTM E84-18b – Standard Test Method for Surface Burning Characteristics of Building Materials

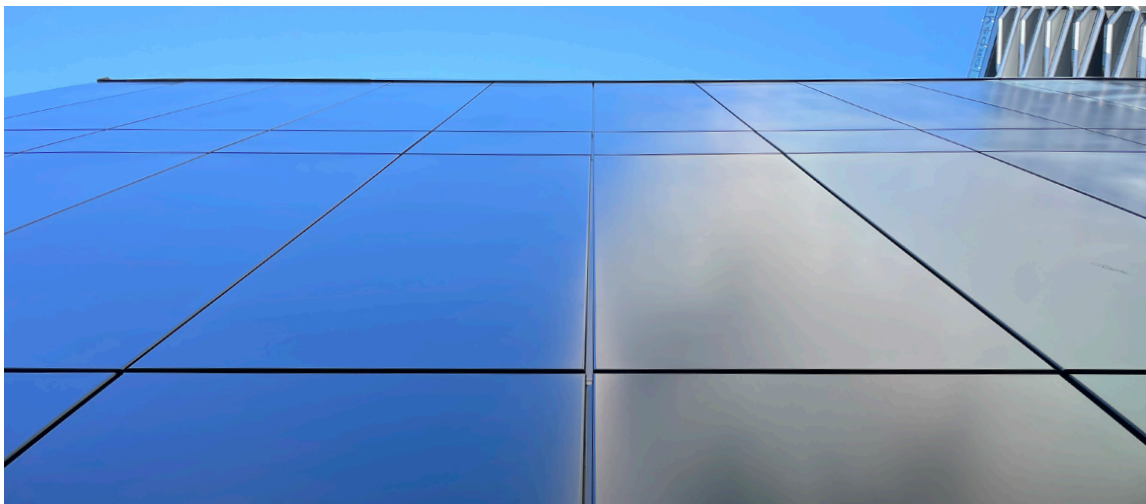
ASTM E330/E330M-14 – Standard Test Method for Structural Performance of Exterior Windows, Doors, Skylights and Curtain Walls by Uniform Static Air Pressure Difference

ASTM E331-00(2016) – Standard Test Method for Determining Rate of Air Leakage Through Exterior windows, Curtain Walls, and Doors Under Specified Pressure Difference Across the Specimen

ASTM E1233/1233M-14 Standard Test Method for Structural Performance of Exterior Windows, Doors, Skylights, and Curtain Walls by Cyclic Air Pressure Differential

AAMA 509-14 - Voluntary Test and Classification Method for Drained and Back Ventilated Rain Screen Wall Cladding Systems

ASTM E283-04(2012) – Standard Test Method for Determining Rate of Air Leakage Through Exterior windows, Curtain Walls, and Doors Under Specified Pressure Difference Across the Specimen



Northern Facades Ltd.
6451 Northwest Drive
Mississauga, ON L4V 1K2
Canada

1-844-740-2050
info@northernfacades.com

NorthernFacades.com